

# Reveleris® Amino and Diol Flash Cartridges

Silica flash cartridges, while effective for many applications, have their limitations for some compound classes like carbohydrates and lipids. For these applications, Grace Davison Discovery Sciences has introduced the Reveleris® Amino and Diol Flash Cartridges.



## Reveleris® Amino Flash Cartridges

- Ideal for polar and basic molecules
- Compounds such as carbohydrates, nitrogen containing heterocycles, amines, etc. which exhibit peak streaking and tailing with unbonded silica cartridges.

## Reveleris® Diol Flash Cartridges

- Alternative selectivity to unbonded and reversed phase media
- Broad application to separate a variety of molecule polarity types including lipids

Reveleris® Bonded Flash Cartridges				
Size	Qty	Amino Part No.	Diol Part No.	C18 Part No.*
4g	1	5157330	5157335	5152990
12g	1	5157331	5157336	5152103
40g	1	5157332	5157337	5152104
80g	1	5157333	5157338	5152105
120g	1	5157334	5157339	5152991

\*Reveleris cartridges also available in Reverse Phase C18 Bonding



Better Cartridges Using Grace Silica

## Better Together - Further Streamline Your Purifications by Combining Reveleris® Cartridges with the Most Advanced Flash System

<b>Reveleris® Cartridge</b> 	+	<b>Reveleris® System</b> 	=	<b>Enhanced Purification Benefits</b> <p><b>Plug &amp; Play</b> Automatic cartridge identification populates the system for size and phase of cartridge in use</p> <p><b>Confidence in Results</b> Serial tracking of cartridges allows for tracking of cartridge use</p> <p><b>Simplifying Purification</b> Specifically for compounds like carbohydrates and lipids, the RevealX™ technology allows maximum purity with minimal effort in a single system</p> <p><b>Faster Runs</b> Optimize your purification with the Navigator software</p>
--	---	---	---	---

Visit [www.discoverysciences.com/FlashChromatography/ApplicationNotes.aspx](http://www.discoverysciences.com/FlashChromatography/ApplicationNotes.aspx) to access the latest applications utilizing Reveleris® flash cartridges

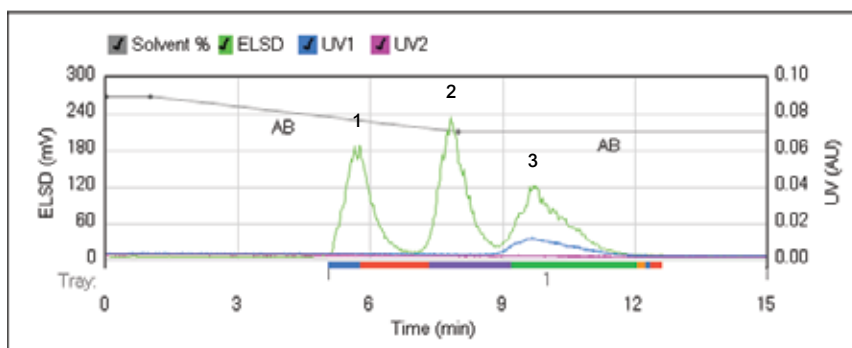


Reveleris® amino and diol bonded phases help chemists to overcome separation challenges in purification with benefits that include:

- Improved retention and resolution of varied polarity compounds
- Increased durability to withstand higher pressures (up to 200psi)
- Higher capacity for higher sample loads
- Tight particle size distribution and minimal fines for low backpressure
- Auto-recognition tagging simplifies instrument operations by prefilling method parameters
- Compatible with organic or aqueous mobile phases



### Conjugated Carbohydrate Purification



Column: Reveleris® Amino 12g flash cartridges  
 Flow Rate: 36mL/min  
 Equilibration: 10.0min  
 Run Length: 15.0min

UV1 Wavelength: 220nm  
 UV2 Wavelength: 254nm  
 ELSD Carrier: Iso-propanol  
 Solvent A: Water with 0.1% TFA  
 Solvent B: Acetonitrile

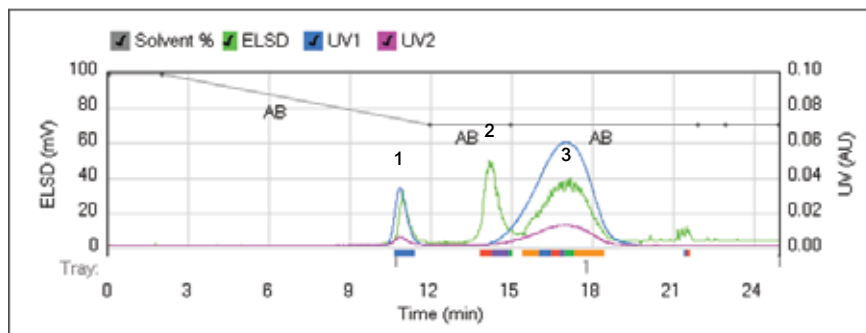
#### Gradient Table

Step	Min	Solvents	% 2nd
1	0.0	AB	90
2	1.0	AB	90
3	7.0	AB	70
4	7.0	AB	70

1. Glucose 25mg
2. Maltose 25mg
3. Acarbose 25mg

Purify even low-levels of chromophoric and non-chromophoric compounds with the amino phase cartridge and RevealX™ technology

### Flavanone Glycoside Purification



Column: Reveleris® Amino 40g flash cartridges  
 Flow Rate: 40mL/min  
 Equilibration: 10.0min  
 Run Length: 25.0min

UV1 Wavelength: 220nm  
 UV2 Wavelength: 254nm  
 ELSD Carrier: Iso-propanol  
 Solvent A: Water  
 Solvent B: Acetonitrile

#### Gradient Table

Step	Min	Solvents	% 2nd
1	0.0	AB	99
2	2.0	AB	99
3	10.0	AB	70
4	13.0	AB	70

1. Hesperitin 20mg
2. Glucose 20mg
3. Neohesperidin 20mg

Combining the high capacity of the amino phase cartridge and RevealX™ technology, neohesperidin is isolated and purified from glucose

[www.discoverysciences.com](http://www.discoverysciences.com)

**GRACE**

ALLTECH® and REVELERIS® are trademarks, registered in the United States and/or other countries, of Alltech Associates, Inc. REVEALX™ is a trademark of Alltech Associates, Inc. GRACE®, and GRACE DAVIDSON® are trademarks, registered in the United States and/or other countries, of W. R. Grace & Co.-Conn. GRACE DAVIDSON DISCOVERY SCIENCES™ is a trademark of W. R. Grace & Co.-Conn. This trademark list has been compiled using available published information as of the publication date of this brochure and may not accurately reflect current trademark ownership or status. Alltech Associates, Inc. is a wholly owned subsidiary of W. R. Grace & Co.-Conn. Grace Davison Discovery Sciences is a product group of W. R. Grace & Co.-Conn., which now includes all product lines formerly sold under the Alltech brand. © Copyright 2010 Alltech Associates, Inc. All rights reserved. The information presented herein is derived from our testing and experience. It is offered for your consideration and verification. Since operating conditions vary significantly, and are not under our control, we disclaim all warranties on the results that may be obtained from the use of our products. W. R. Grace & Co.-Conn. and its subsidiaries can not be held responsible for any damage or injury occurring as a result of improper installation or use of its products. Grace reserves the right to change prices and/or specifications without prior notification.

11/2010 M359

**W. R. Grace & Co.-Conn.**  
**7500 Grace Drive, Columbia, MD 21044**

Grace Davison Discovery Sciences Regional Headquarters:

**IN THE AMERICAS:**  
 2051 Waukegan Road  
 Deerfield, IL 60015-1899  
 Tel: 1 847 948 8600  
 Fax: 1 847 948 1078  
 Email: [discoverysciences@grace.com](mailto:discoverysciences@grace.com)

**IN EUROPE:**  
 Brandstraat 12  
 B-9160 Lokeren, Belgium  
 Tel: +32 (0)9 340 65 65  
 Fax: +32 (0)9 340 65 60  
 Email: [discoverysciences.EU@grace.com](mailto:discoverysciences.EU@grace.com)

**IN ASIA:**  
 19th Floor, K.Wah Center  
 1010 Huai Hai Zhong Road  
 Shanghai, 200031 PRC  
 Tel: 86 21 5467 4678  
 Fax: 86 21 5405 1500  
 Email: [dsbiz.asia@grace.com](mailto:dsbiz.asia@grace.com)

**IN INDIA:**  
 17 Commerce Center  
 Opposite Krishna Hospital, Paud Road  
 Pune, 411038 India  
 Tel: +91 20 6644 9900  
 Fax: +91 20 2544 1740  
 Email: [pune@grace.com](mailto:pune@grace.com)

**IN AUSTRALIA/NEW ZEALAND:**  
 2 Kerr Court  
 Rowville, 3178  
 Victoria, Australia  
 Tel: +61 3 9237 6100  
 Fax: +61 3 9237 6101  
 Email: [discoverysciences.AU@grace.com](mailto:discoverysciences.AU@grace.com)