

Stainless Steel Tubing and Fittings

Tubing and Fitting Kits for MODcol® Flanged and Spring™ Columns

Tubing and Fitting Kits

Description	Part No.
1/16" o.d., 0.020" i.d. Connecting Tube and Fittings*	AS2002-025A06
1/16" o.d., 0.040" i.d. Connecting Tube and Fittings*	AS2002-025A07
1/8" o.d., 0.060" i.d. Connecting Tube and Fittings**	AS2002-050A08
1/8" o.d., 0.085" i.d. Connecting Tube and Fittings**	AS2002-050A09

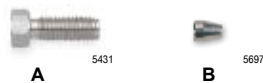
*1 union, 1 nut, 1 ferrule, and 2 plugs. Compatible with flanged and Spring™ Columns up to 25mm i.d.

**1 union, 1 nut, 1 ferrule, 2 plugs, and 2 female reducers 1/8" to 1/16." Compatible with flanged and Spring™ Columns of 30mm i.d. and greater.

Valco® High-Pressure Fittings

Valco® Fitting Specifications	
Material:	316 Stainless Steel
Max. Temperature:	500°C
Max. Pressure:	10,000psig
Typical Use:	High-Pressure Tubing Connections

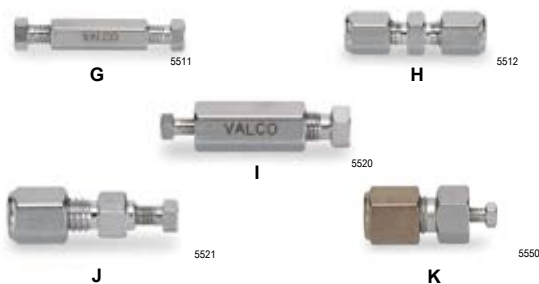
Valco® Nuts and Ferrules



Valco® Nuts and Ferrules

Graphic	Description	Qty.	Part No.
<i>Stainless Steel Nuts</i>			
A	1/16" Nut	10	306121
A	1/8" Nut	10	306151
<i>Stainless Steel Ferrules</i>			
B	1/16" (Type 316)	10	30646
B	1/8" (Type 316)	10	30647

Valco® Unions



Valco® Unions

Graphic	Size	Bore	Part No.
<i>Internal Unions</i>			
G	1/16"	0.50mm	30714
G	1/16"	0.75mm	30715
G	1/16"	1/16"	45835
G	1/8"	2.0mm	30718
G	1/8"	1/8"	30719
<i>External Unions</i>			
H	1/8"	2.0mm	30731
<i>Internal Reducing Unions</i>			
I	1/8" to 1/16"	0.25mm	30746
I	1/8" to 1/16"	0.75mm	45850
I	1/4" to 1/8"	1/8"	30755
<i>External/Internal Reducing Unions</i>			
J	1/8" to 1/16"	1/16"	30761
J	1/4" to 1/8"	2.0mm	30765
J	1/4" to 1/8"	1/8"	30766
<i>Column Endfittings</i>			
K	1/4" to 1/16"	2.1mm	45905
K	1/4" to 1/16"	3.0mm	45907

Hi-EFF™ Grade Stainless Steel Tubing

Hi-EFF™ grade stainless steel tubing is especially tempered for easy bending and is washed with acetone to remove any residual materials.



Hi-EFF™ Stainless Steel Tubing Specifications	
Material:	316 Series Stainless Steel
Maximum Temperature:	500°C
Maximum Pressure:	Varies according to i.d.*
Typical Use:	High-Pressure Plumbing

*Request datasheet 3005D for more information.

Hi-EFF™ Grade Stainless Steel Tubing

o.d.	i.d.	Per Ft** Part No.	Per Meter Part No.	50ft Coil Part No.
<i>Type 316 Stainless Steel</i>				
1/8" (3.18mm)	0.085" (2.16mm)	30105	30107	30109
1/4" (6.35mm)	0.210" (5.33mm)	30307	30308	30309

**Minimum tubing order is 3'.

Stainless Steel Tubing

This Stainless Steel Tubing is the same high quality as the Hi-EFF™ grade, but has not been washed with acetone.

Stainless Steel Tubing Specifications	
Material:	316 Series Stainless Steel
Maximum Temperature:	500°C
Maximum Pressure:	Varies according to i.d.*
Typical Use:	High-Pressure Plumbing

*Request datasheet 3005D for more information.

Stainless Steel Tubing

o.d.	i.d.	Per Ft** Part No.	Per Meter Part No.	50ft Coil Part No.	200ft Coil Part No.
<i>Type 316 Stainless Steel</i>					
1/16" (1.59mm)	0.020" (0.51mm)	3002100	300230	3002	300220
	0.040" (1.02mm)	30031	30033	3003	—

**Minimum tubing order is 3'.

related products

For additional information on HPLC fittings see pages 112–122, and for tubing information see pages 384–391.



Pumps, Injectors, and Switching Valves

Model 627 Preparative HPLC Pump



Flow rate range of 0.1mL/min to 100.0mL/min. 6774

Ideal for Scale-up Work, Semi-Prep and Preparative HPLC

- Dual piston mechanism for pulse-free operation
- Built-in low dead volume pulse dampener
- Self-flushing pump head for longer seal life
- Isocratic or high-pressure binary gradient

The Model 627 Preparative Pump delivers the accuracy and precision of a standard analytical pump at flow rates up to 100mL/min. Consistent flow rates and pressures minimize the potential for column damage. The 627 pump is available in 316 stainless steel or biocompatible PEEK.

Model 627 HPLC Pump Specifications	
Max. Operating Pressure:	4000psig (both SS and PEEK)
Flow Rate Range:	0.1–100.0 mL/min
Flow Rate Precision:	0.5% RSD
Flow Accuracy:	±2.0%
Gradient Mixing Mode:	High-Pressure
Gradient Profiles:	Programmable Multi-step
Gradient Programming:	10 methods with up to 100 lines per method
Dimensions:	6" H x 11" W x 18" D (15cm H x 26cm W x 46cm D)
Weight:	35lb (16kg)
Warranty:	1-year parts, 1-year labor, excluding seals and check valves

Model 627 Preparative Pump	
Description	Part No.
<i>Isocratic System</i>	
PEEK, 85-265VAC, 47-63Hz	627150
Stainless Steel, 85-265VAC, 47-63Hz	627250

Kits and Accessories	
Description	Part No.
<i>Replacement Parts</i>	
Piston Seal Kit	120681
Piston	121504
Check Valve Kit, Stainless Steel	120679
Check Valve Kit, Metal-Free	060141

Note: All replacement parts kits contain parts for one pump head only.

Rheodyne® Model 3725 Prep-Scale Injectors

- Sample range 100µL to 20mL
- Flow rates from 10 to 800mL/min
- Uses 16-gauge needle
- 1.0mm (0.04") flow passages



5495

These injectors are used with preparative HPLC columns from 1 to 10cm diameter. They have the ease of use and versatility of Rheodyne's analytical-scale sample injectors, plus the capacity for large sample volumes and flow rates.

The Model 3725 Valves are available in stainless steel or PEEK, and with a built-in position sensing switch (Model 3725i-038 or 3725i). Each model is supplied with a 10mL loop and 1/8" fittings must be used. An optional port adapter can be used to connect 1/16" tubing. Suitable for pressures up to 5000psig.

Rheodyne® Prep-Scale Sample Injectors		
Description	Version	Part No.
<i>Prep Injection Valves</i>		
Model 3725-038	SS	37255
Model 3725i-038	SS	37256
<i>Accessory</i>		
Port Adapter for 1/16" tubing	—	600760

Rheodyne® Manual Switching Valves

- Inexpensive manual switching valve
- Wide-bore version for prep



5619

Rheodyne® HPLC Switching Valves offer an endless variety of ways to simplify switching and injecting. Standard valves are supplied with 0.024" internal flow passages and are suitable for use with analytical and semi-preparative applications. Large bore valves with 0.040" internal flow passages are available for use at high flow rates (greater than 50mL/min) 7000psig pressure limit.

A spring detent mechanism included in the six-position selection valve permits full circle rotation in either direction and ensures that the rotor "falls into" each of the six positions at the precise 60° spacing.

Rheodyne® Manual Switching Valves			
Description	Version	Bore	Part No.
<i>2-Position Valves</i>			
6-Port*	SS	Standard	7000RV
6-Port*	SS	Large Bore	7000L
3-Way	SS	Standard	7030RV
<i>Multi-Position Valves</i>			
6-Position 6-Port	SS	Standard	7060RV

*5000psig pressure rating for 2-position 6-Port.