

# Column Packing Services

- Experience packing hundreds of types of media, Grace and non-Grace media
- Packing service available for Spring™ Columns and Flanged Column hardware
- Column Efficiency Report (CER) provided with each column

Since 1982 Grace's MODcol® division has successfully packed thousands of preparative columns with hundreds of different media. Proven proprietary procedures together with quality hardware allow Grace to provide preparative columns with high efficiency, excellent resolution and low backpressure.

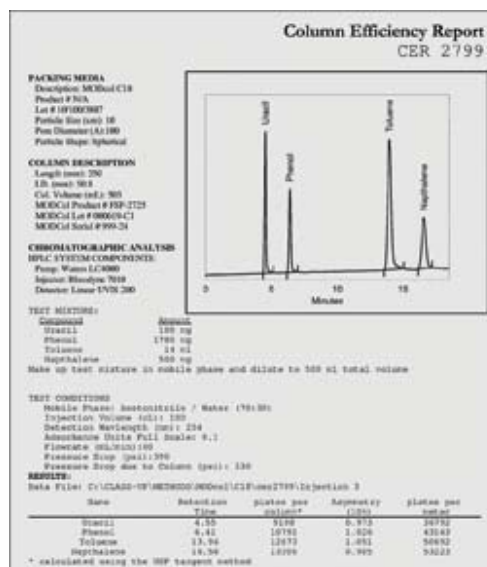
The result of each packing is validated and presented to the customer in the form of a Column Efficiency Report (CER). This report summarizes the product, the testing protocol, and presents the chromatographic data in a graphical and tabular format that is easy to understand. Only when the customer approves the result is the column shipped.

Grace supplies end users with the world's only ready-to-use axial compression system, the prepacked Spring™ Column unit. Empty Spring™ Column hardware can be ordered and, combined with media purchased from Grace or supplied by the end user and the packing services shown below, delivered as a ready-to-use product. Grace packs Spring™ Column units using the Multipacker® instruments described earlier in this section. Purchasing a prepacked Spring™ Column unit is a great way to evaluate the performance of this novel product under real-world conditions. Unpacking and repacking the Spring™ Column unit must be done by Grace or on a user's own Multipacker® instrument.

Each custom-packed Spring™ Column unit is validated as described above.

Please note that the 40cm long Spring™ Column body can accommodate bed lengths up to 15cm, and the 70cm-long Spring™ Column body can accommodate a maximum bed length of 30cm. For intermediate beds, please specify the length to be packed by modifying the last two digits of the part number shown, e.g., for a 50mm i.d. x 40cm Spring™ Column unit packed to a bed height of 12cm, specify part number **PS0000-050412**. For information concerning the amount of media that will be required to pack a particular bed length please call your local sales person, distributor, or Grace technical support.

# Column Efficiency Report (CER)



7389

## technical assistance

Contact Tech Support: Phone: 1.800.255.8324 (North America)  
 Email: [contact.alltech@grace.com](mailto:contact.alltech@grace.com)  
 Online: [www.discoverysciences.com](http://www.discoverysciences.com)

### Column Packing Services for Flanged Columns

i.d.	Length					
	5cm	10cm	15cm	25cm	30cm	50cm
25mm	PA0000-025005	PA0000-025010	PA0000-025015	PA0000-025025	C	C
30mm	PA0000-030005	PA0000-030010	PA0000-030015	PA0000-030025	C	C
50mm	PA0000-050005	PA0000-050010	PA0000-050015	PA0000-050025	PA0000-050030	PA0000-050050
101mm	—	PA0000-101010	PA0000-101015	PA0000-101025	PA0000-101030	PA0000-101050

C = available as custom.

### Column Packing Services for Spring™ Column and Axial SFC Column

Column i.d.	Bed Length				
	5cm	10cm	15cm	25cm	30cm
25mm x 40cm	PS0000-025405	PS0000-025410	PS0000-025415	—	—
25mm x 70cm	PS0000-025705	PS0000-025710	PS0000-025715	PS0000-025725	PS0000-025730
50mm x 40cm	PS0000-050405	PS0000-050410	PS0000-050415	—	—
50mm x 70cm	PS0000-050705	PS0000-050710	PS0000-050715	PS0000-050725	PS0000-050730
101mm x 40cm	PS0000-101405	PS0000-101410	PS0000-101415	—	—
101mm x 70cm	PS0000-101705	PS0000-101710	PS0000-101715	PS0000-101725	PS0000-101730