

Cat.No.: 01001
Cat.No.: 010012

Quantity: 100 mg
Quantity: 12.4 mg

DEA Schedule

2

NDC No.: 0079-0009-01
NDC No.: 0079-0009-03

Description: *d*-Methamphetamine HCl
Alternate Names: *d*-Desoxyephedrine, METHEDRINE, "Speed"

Formula: C₁₀H₁₅N•HCl

Formula Weight: 185.70
Base Weight: 149.24

Melting Point: 173-175°C

Merck Index No.: 12,6015

Solubility: Soluble in water, alcohol, and chloroform. Practically insoluble in ether.

Hazards: See Material Safety Data Sheet (MSDS).

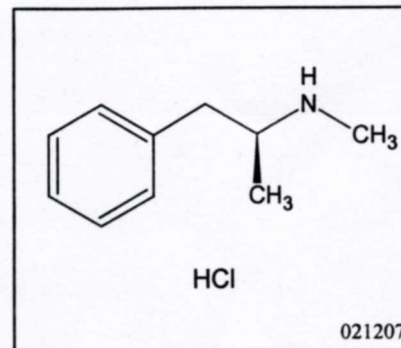
Storage: Store below room temperature in a tightly closed light-resistant container. Use only fresh solutions.

RTECS No.: SH5075000

CAS No.: 51-57-0

Comments: GC/MS data is for *d*-methamphetamine free base.

USAN Pharmacologic Class: Stimulant (central).



QC Approval:

D. Agostinelli

David Agostinelli, Chemist

GC/MS Data for Lot No. 097

GC/FID Purity: 99+%

Column: 30m x 0.25mm x 0.25µm AT-5ms, Temperature: 40-280°C (6 minute hold) at 10°C/minute, Flow Rate: 0.8 mL/minute He, Inj: 100:1 split

