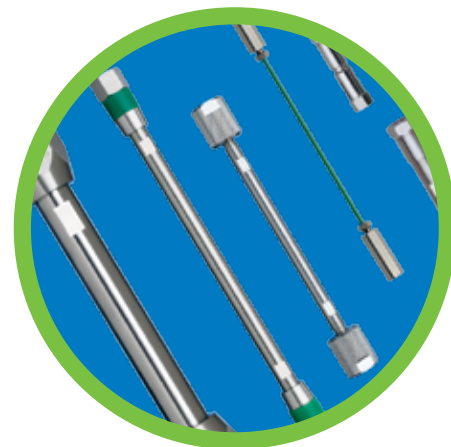


Fast peptide Separations with increased resolution

with VisionHT™ Media Platform Columns

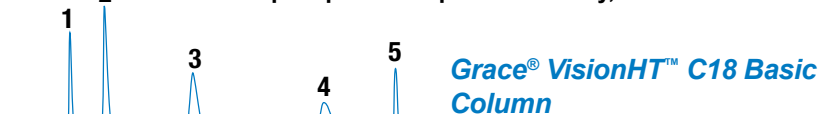
- Speed and resolution on any system - LC, UHPLC, or Semi-Prep
- 1.5-10µm orthogonal chemistries simplify separation strategies
- Single particle technology improves laboratory and organizational efficiency.



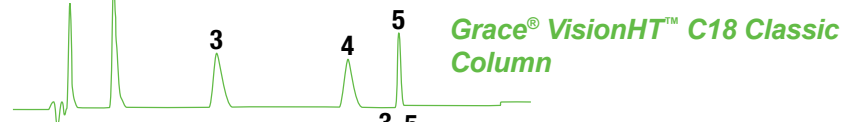
VisionHT™ Media Platform Specifications

Particle Size:	1.5, 3.0, 5.0, 10µm
Base Silica:	High Purity Type B
Pore Size:	100Å for C18 Classic & C18 Polar 120Å for C18 Basic & C18 High Load
Surface Area:	200m ² C18 Classic & C18 Polar 220m ² C18 Basic & C18 High Load
pH Stability:	1-10
Pressure Rating:	16,000psig (UHPLC formats)

Multiple options for peak selectivity, and increased resolution for complex samples.



1. GY (238 Da)
2. VYV (379 Da)
3. Met Enkephalin (YGGFM, 573 Da)
4. Leu Enkephalin (YGGFL, 555 Da)
5. Angiotensin II (DRVYIHPF, 1045 Da)



Columns: Sub 2µm, 2.0 x 50mm
HPLC System: Agilent 1200 RRLLC
Mobile Phase A: 0.1% TFA in Water
Mobile Phase B: 0.085% TFA in 80:20 Acetonitrile:Water
Gradient (min,%B): (0.0, 5), (1.0,100), (2,100)
Flow Rate: 0.8mL/min.
Detector: UV at 215nm
Injection Volume: 10µL
Injection Amount: 1000ng each
Column Temperature: 45°C
Column Backpressure: 508bar

0 0.5 1.0 1.5 2.0 Min.